

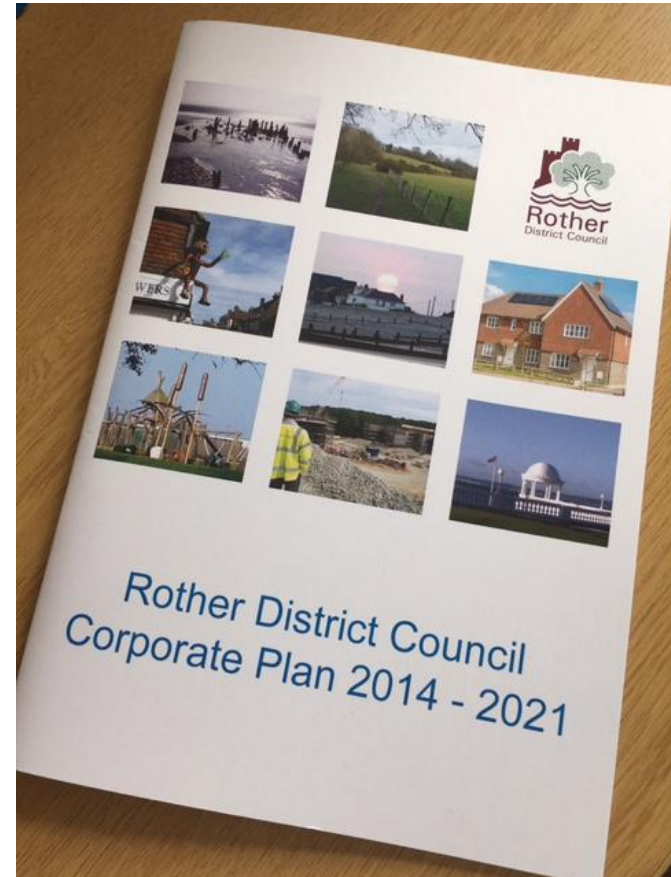


**HOUSING  
IN  
ROTHER**

**The Council's role and the  
challenges we face**

## Corporate priorities

- Financial Challenges
- Corporate Aims:
  - An Efficient, Flexible and Effective Council
  - Sustainable Economic Prosperity
  - Stronger, Safer Communities
  - A Quality Physical Environment



## RDC Housing Role

- Local Planning Authority (including affordable development)
- Housing Needs & Homelessness
- Private Sector Housing
- Disabled Facilities Grants

## The Role of Planning

- Housing Numbers
- Affordable Housing Requirements
- Quality and Design and Balanced Communities
- Neighbourhood Planning (rural)
- North East Bexhill
- North Bexhill (NBAR)
- Regeneration

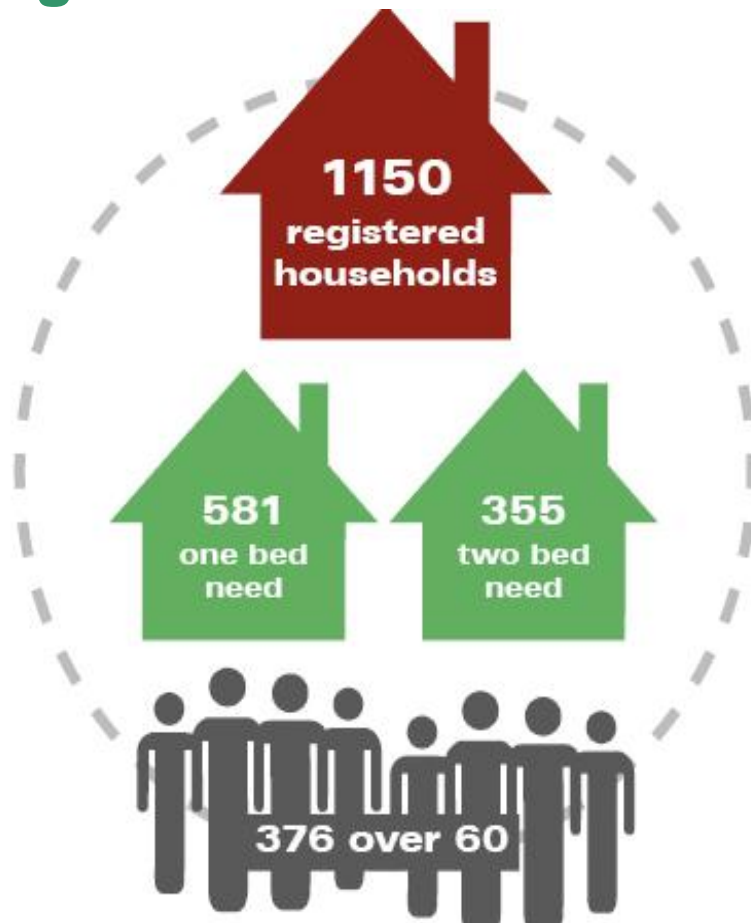


## Recent Changes (and their Impact on Local Policy & Development)

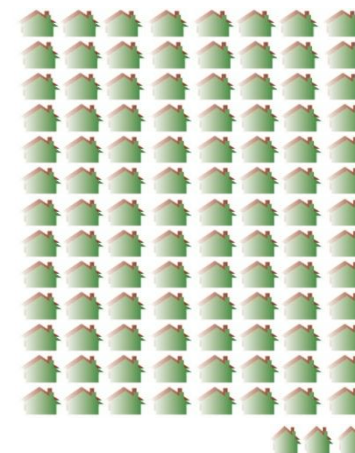
- NPPG – Affordable Housing Thresholds
- Housing & Planning Act 2016
  - Starter Homes
  - Self Build and Custom Build



## Housing Needs & Homelessness



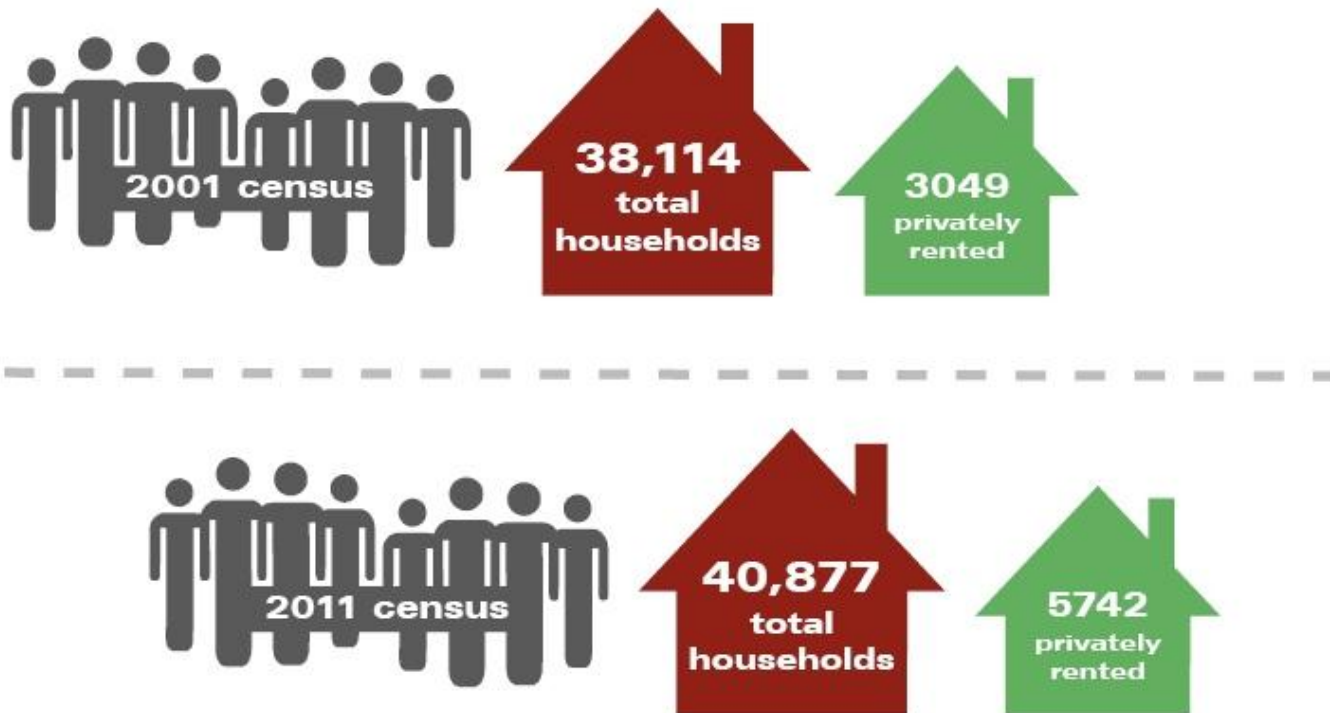
**107** new affordable homes during 2015-16



## Disabled Facilities Grants

Year completed	Budget (£)	Total spend (£)	Number of grants
2012/13	656,796	732,171	115
2013/14	607,124	438,390	68
2014/15	727,729	715,000	85

## Private Rented Sector



- Concentrated in Central Bexhill and parts of Rye
- Complaints - Damp & Excess Cold



## Way Forward

- Different delivery required:
  - Best Practice:
    - Local Housing Companies
    - Private Sector Housing Initiatives
    - Self Build Initiatives
- Changing Environment



## For You to Consider Today:



What factors do we need to consider in strategic planning for housing? What are our affordable housing priorities?



Where should we direct our resources?



How can we meet the challenges facing us?



How can we work together to deliver more and meet needs more effectively?