

# TACKLING HEALTH AND WELLBEING ISSUES RELATED TO COLD HOMES

Richard Watson, NHS Hastings and  
Rother Clinical Commissioning Group  
and  
Marie Jones, East Sussex Fuel Poverty  
Co-ordinator

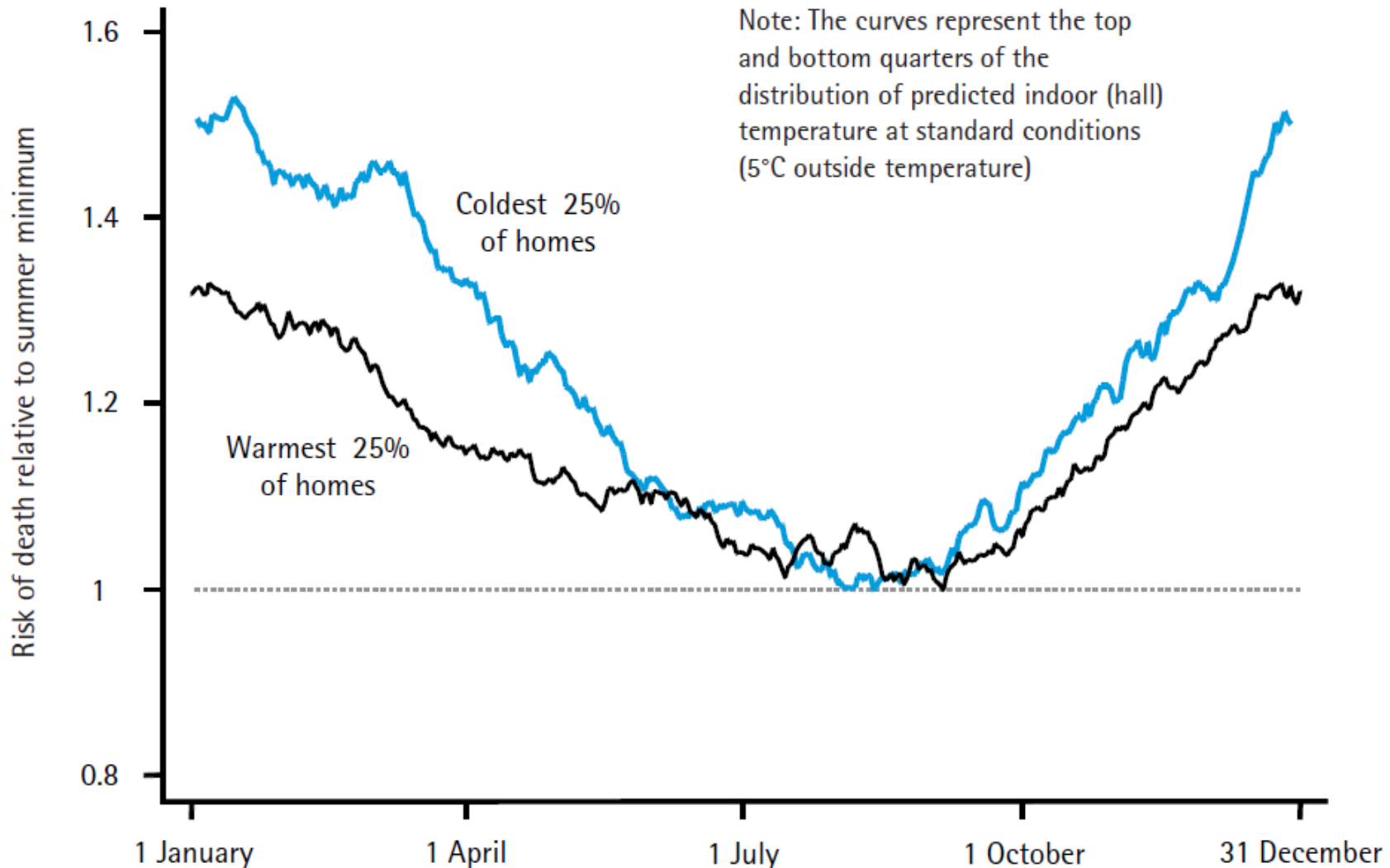


# Risk to health

- Excess winter deaths (EWD) are the additional deaths that occur in winter months when compared with the non-winter months, due to various factors including:
  - the temperature
  - the level of disease in the population
  - how well equipped people are to cope with the drop in temperature
- Around 30% of EWD are because of the impact cold indoor temperatures have on vulnerable people.

# Risk of death from cold homes

Figure 6: Seasonal fluctuation in mortality in cold and warm homes



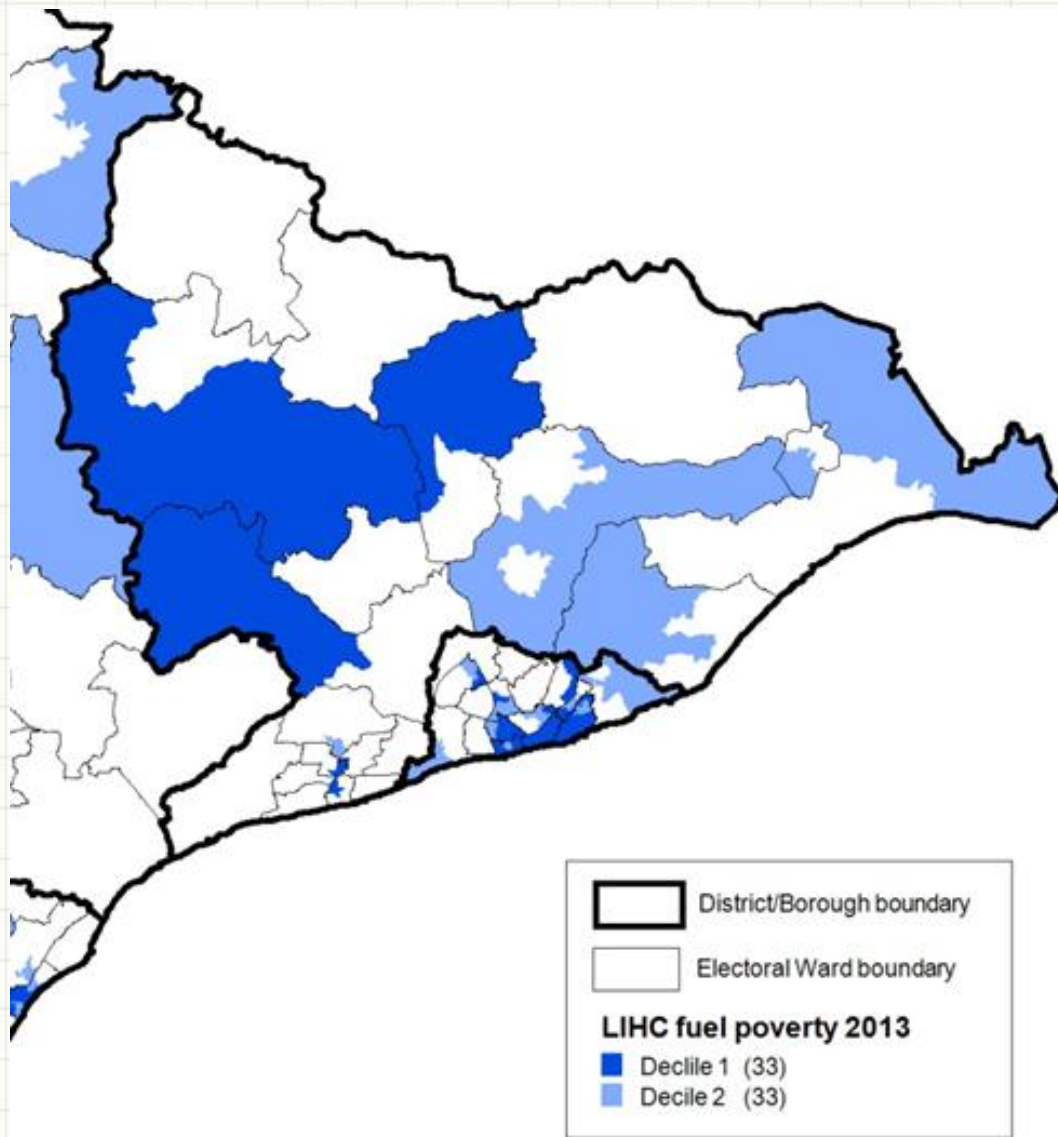
# Health impacts – cold homes

## Potential impacts:

- Increased blood pressure leading to heart disease and strokes
- Increased respiratory illness chronic bronchitis or emphysema
- Worsening arthritis and rheumatism
- Increased falls and accidents
- Worsening of long-term medical conditions including mental health
- Poorer nutrition
- Increased admissions to acute services
- Hypothermia

# Rother's vulnerable population

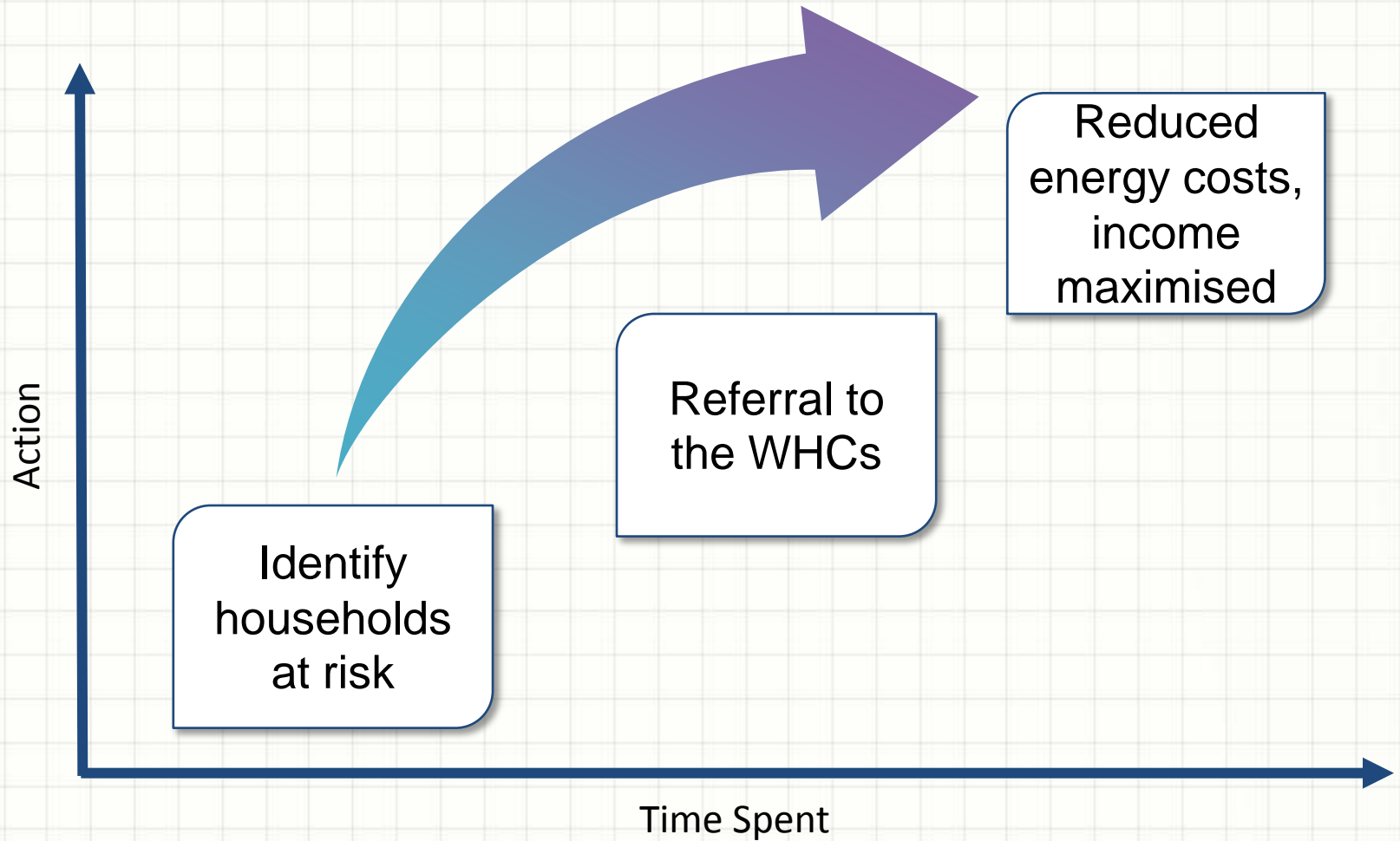
- 31.1 % of Rother's population is over 65 years old
- 21, 242 Rother residents living in super output areas with limiting long-term illness in 2011
- 14,096 children living in super output areas
- Fuel poverty across Rother: 8.9%



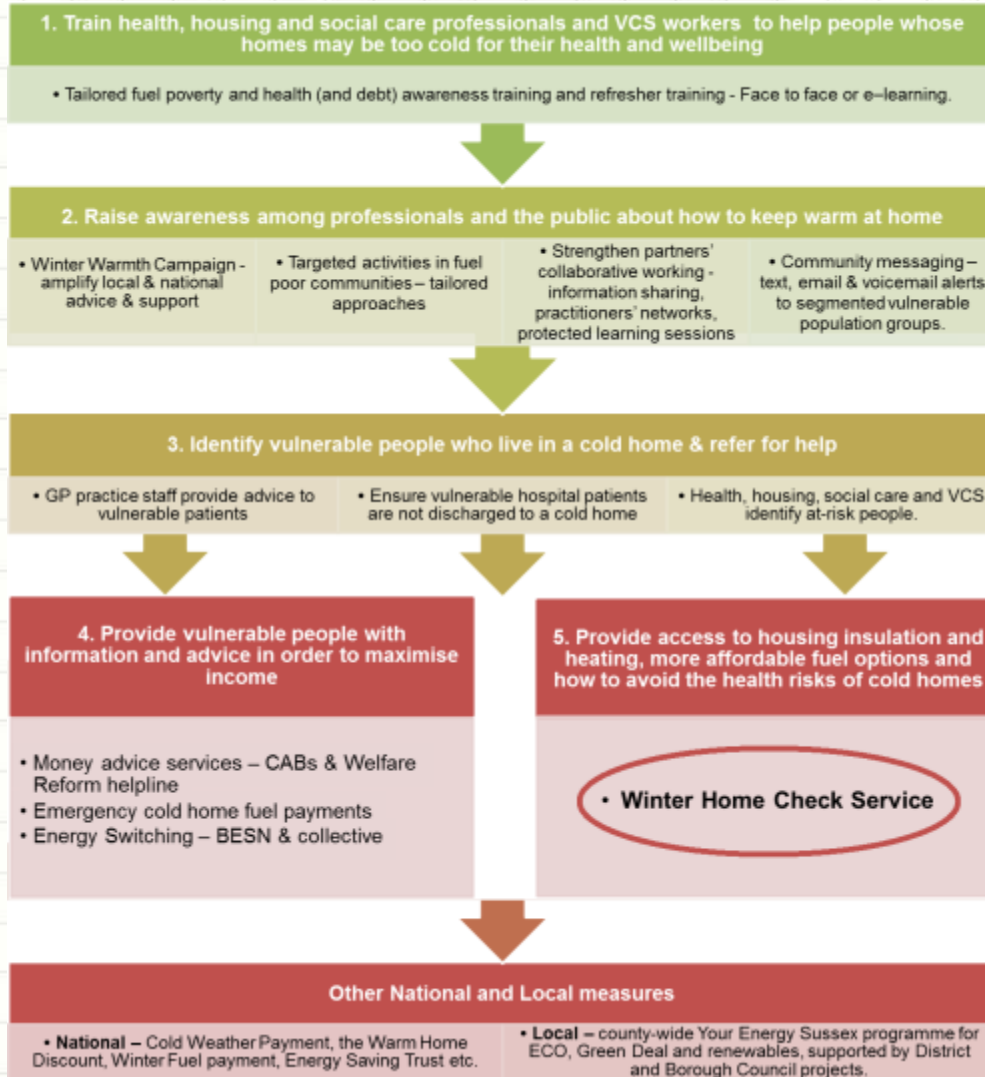
## Low Income High Cost map

East Sussex Public health intelligence team May 2015.

# Working Together



# East Sussex Fuel Poverty Reduction Pathway



- Train front line workers to identify households at risk
- Raise awareness at a professional level
- Encourage to Refer
- Local support
- ✓ Winter home check service
- ✓ CAB, BESN
- National support
- ✓ ECO



supporting

**STAY WELL  
THIS WINTER**

## RESOURCES

[WWW.EASTSUSSEX.GOV.UK/PUBLICHEALTHRESOURCES](http://WWW.EASTSUSSEX.GOV.UK/PUBLICHEALTHRESOURCES)



# Training available

Bespoke training

- Staff meetings
- Training events
- Fuel poverty practitioners forum

Email:

[mjones@hastings.gov.uk](mailto:mjones@hastings.gov.uk)



# Winter Home Check Service

This free year-round service helps vulnerable people (including families with young children), on low incomes, to get advice and support to keep their home warm.

The service includes:

- A full assessment of the client's home and how best to keep it warm
- Small preventative works such as improving insulation, draft excluders and boiler repairs
- Installation of new boilers, central heating systems or home insulation funded by the NEA (subject to additional eligibility and limited availability)
- Providing emergency temporary heating.

There is also access to advice on financial help with heating costs and energy switching support.

# Progress

## HOME VISITS

### Winter home check service

- 352 completed home visits
- 699 minor measures completed
- 295 support with energy switch and bill checking

## MAJOR MEASURES

### NEA fund

- 88 households have received new heating systems or boilers so far
- A total of 140 households identified as eligible and in need of a major measure



**QUESTIONS?**